

reported to the General Purposes Committee and in the light of that meeting a joint report forms part of the Conference Agenda. The formal report of the Triennial Return is to be found in the tables below.

II. TRIENNIAL RETURNS

SUMMARY AND COMPARISON

| | 1989 | 1990 | 1991 | 1992 | 3 Year gain/loss |
|------------------------|-----------|-----------|-----------|-----------|------------------|
| COMMUNITY ROLL | 1,321,383 | 1,320,231 | 1,303,965 | 1,289,509 | -31,874 |
| MEMBERSHIP | 431,549 | 424,540 | 416,131 | 408,107 | -23,442 |
| GAINS | | | | | 3 YEAR TOTAL |
| NEW MEMBERS | 9,188 | 8,492 | 7,451 | 7,598 | 23,541 |
| RESTORED TO MEMBERSHIP | 2,278 | 2,005 | 1,685 | 1,791 | 5,481 |
| Balance of transfers: | | | | | |
| FROM OTHER DENOM. | +1,420 | +1,502 | +775 | 938 | +3,215 |
| FROM OVERSEAS | +106 | +69 | 128 | 94 | 291 |
| MINISTERS AND STUDENTS | -10 | +80 | +5 | 2 | +87 |
| GARRISONS | +13 | -2 | +0 | +37 | +35 |
| LOSSES | | | | | |
| DEATHS | 10,703 | 11,215 | 10,753 | 10,551 | 32,519 |
| CEASED TO BE MEMBERS | 7,168 | 7,368 | 7,251 | 7,548 | 22,167 |
| Balance of transfers: | | | | | |
| TO OTHER CHURCHES | 2 | -5 | -27 | 15 | -17 |
| TO OTHER CIRCUITS | -387 | -567 | -422 | -400 | -1,389 |
| NETT LOSS | -5,261 | -7,009 | -8,409 | -8,024 | -23,442 |
| BAPTISMS | 30,864 | 30,195 | 28,922 | 27,940 | +87,057 |
| CHURCHES | 7,207 | 7,129 | 7,052 | 6,950 | -257 |
| MINISTERS AND STUDENTS | 3,514 | 3,594 | 3,599 | 3,601 | +87 |

03 CHURCH MEMBERSHIP

I. INTRODUCTION

This year the Triennial Statistics are published and we have the additional benefit of the Property Division's ten-yearly survey of church buildings. At the request of the General Purposes Executive a small group was set up of the Connexional Administrative Officer and a representative from the Property Division, Home Mission Division, and Division of Ministries to look at the wider questions concerning the Church's mission in the light of the 'stock taking'. This group

BAPTISMS AND NEW / REINSTATED MEMBERS 1990 - 1992

| | Baptisms <13 | | Baptisms 13+ | | New Members | | Reinstated | | | | | |
|---|--------------|-------|--------------|------|-------------|------|------------|------|------|------|------|------|
| | 1990 | 1991 | 1990 | 1991 | 1990 | 1991 | 1990 | 1991 | | | | |
| Southern Districts: | | | | | | | | | | | | |
| 1. The London North-East District | 1448 | 1429 | 1333 | 54 | 34 | 33 | 390 | 341 | 335 | 75 | 84 | 48 |
| 2. The London North-West District | 1356 | 1278 | 1305 | 123 | 38 | 56 | 507 | 378 | 395 | 59 | 51 | 84 |
| 3. The London South-West District | 1216 | 1231 | 1224 | 49 | 37 | 37 | 488 | 432 | 515 | 101 | 96 | 99 |
| 4. The London South-East District | 1021 | 891 | 967 | 36 | 32 | 38 | 343 | 338 | 329 | 66 | 77 | 60 |
| 5. The Birmingham District | 1556 | 1578 | 1404 | 16 | 38 | 38 | 404 | 376 | 302 | 97 | 83 | 66 |
| 6. The Bristol District | 1076 | 1159 | 1141 | 32 | 40 | 45 | 341 | 317 | 310 | 102 | 61 | 115 |
| 7. The South Wales District | 639 | 669 | 684 | 60 | 49 | 42 | 236 | 206 | 291 | 39 | 46 | 44 |
| 8. The Cornwall District | 610 | 627 | 492 | 53 | 45 | 39 | 260 | 173 | 226 | 43 | 36 | 61 |
| 9. The East Anglia District | 653 | 617 | 645 | 34 | 12 | 20 | 197 | 179 | 237 | 35 | 53 | 50 |
| 10. The Oxford and Leicester District | 984 | 983 | 889 | 55 | 28 | 33 | 327 | 270 | 260 | 75 | 77 | 52 |
| 11. The Plymouth and Exeter District | 673 | 648 | 588 | 33 | 29 | 28 | 371 | 268 | 223 | 63 | 56 | 56 |
| 12. The Southampton District | 862 | 860 | 718 | 28 | 25 | 28 | 331 | 316 | 343 | 74 | 68 | 86 |
| 13. The Wolverhampton and Shrewsbury District | 1818 | 1639 | 1625 | 25 | 21 | 11 | 373 | 265 | 333 | 49 | 57 | 95 |
| Southern Totals: | 13912 | 13609 | 13015 | 598 | 428 | 448 | 4568 | 3859 | 4099 | 878 | 845 | 916 |
| Northern Districts: | | | | | | | | | | | | |
| 6. The Bolton and Rochdale District | 494 | 469 | 425 | 9 | 20 | 154 | 177 | 183 | 220 | 38 | 36 | 39 |
| 9. The Cumbria District | 407 | 381 | 375 | 2 | 4 | 3 | 122 | 106 | 74 | 28 | 27 | 13 |
| 11. The Chester and Stoke-on-Trent District | 1629 | 1498 | 1521 | 16 | 11 | 17 | 298 | 311 | 252 | 115 | 79 | 98 |
| 13. The Darlington District | 1247 | 1193 | 1127 | 15 | 13 | 8 | 222 | 222 | 263 | 74 | 41 | 54 |
| 16. The Leeds District | 926 | 936 | 915 | 12 | 19 | 10 | 243 | 190 | 253 | 74 | 45 | 61 |
| 17. The Lincoln and Grimsby District | 640 | 528 | 499 | 8 | 17 | 6 | 150 | 205 | 186 | 53 | 23 | 41 |
| 18. The Liverpool District | 1009 | 930 | 981 | 17 | 23 | 9 | 346 | 306 | 217 | 57 | 65 | 44 |
| 19. The Manchester and Stockport District | 1094 | 972 | 952 | 18 | 24 | 27 | 413 | 321 | 225 | 101 | 62 | 72 |
| 20. The Newcastle upon Tyne District | 1880 | 1875 | 1825 | 17 | 11 | 17 | 356 | 268 | 252 | 111 | 70 | 54 |
| 21. The North Lancashire District | 613 | 578 | 524 | 11 | 9 | 16 | 203 | 347 | 238 | 94 | 54 | 51 |
| 22. The Nottingham and Derby District | 1127 | 920 | 931 | 31 | 25 | 24 | 363 | 235 | 363 | 56 | 50 | 58 |
| 25. The Sheffield District | 1547 | 1545 | 1519 | 17 | 16 | 23 | 363 | 305 | 298 | 93 | 68 | 67 |
| 27. The West Yorkshire District | 825 | 843 | 753 | 31 | 12 | 12 | 208 | 170 | 161 | 61 | 75 | 63 |
| 29. The York and Hull District | 1323 | 1299 | 1110 | 13 | 12 | 8 | 206 | 217 | 206 | 74 | 68 | 74 |
| Northern Totals: | 14761 | 13967 | 13457 | 217 | 216 | 334 | 3670 | 3386 | 3208 | 1029 | 763 | 789 |
| 10. The Channel Islands District | 119 | 109 | 117 | 2 | 2 | 3 | 56 | 29 | 43 | 25 | 16 | 11 |
| 15. The Isle of Man District | 62 | 66 | 49 | 1 | 3 | 27 | 34 | 32 | 32 | 2 | 8 | 9 |
| 30. The Cymru District | 97 | 77 | 97 | 5 | 1 | 16 | 16 | 32 | 38 | 13 | 6 | 18 |
| 31. The Scotland District | 197 | 165 | 165 | 13 | 11 | 7 | 71 | 50 | 98 | 31 | 31 | 19 |
| 32. The Shetland District | 16 | 21 | 9 | 4 | 1 | 2 | 8 | 4 | 1 | 3 | | |
| 33. The North Wales District | 192 | 239 | 228 | 5 | 5 | 5 | 76 | 57 | 79 | 24 | 16 | 29 |
| Totals: | 29356 | 28253 | 27137 | 839 | 669 | 803 | 8492 | 7451 | 7598 | 2005 | 1685 | 1791 |

DEATHS AND LAPSED MEMBERS BY DISTRICT 1990 - 1992

| | Deaths | | Lapsed Members | |
|---|--------|-------|----------------|------|
| | 1990 | 1991 | 1990 | 1991 |
| Southern Districts: | | | | |
| 1. The London North-East District | 369 | 350 | 381 | 331 |
| 2. The London North-West District | 363 | 363 | 428 | 371 |
| 3. The London South-West District | 517 | 423 | 447 | 334 |
| 4. The London South-East District | 322 | 327 | 362 | 283 |
| 5. The Birmingham District | 359 | 373 | 383 | 303 |
| 7. The Bristol District | 410 | 388 | 384 | 312 |
| 8. The South Wales District | 269 | 292 | 283 | 168 |
| 12. The Cornwall District | 320 | 372 | 327 | 215 |
| 14. The East Anglia District | 362 | 314 | 330 | 136 |
| 23. The Oxford and Leicester District | 341 | 368 | 329 | 227 |
| 24. The Plymouth and Exeter District | 492 | 522 | 470 | 277 |
| 26. The Southampton District | 510 | 494 | 494 | 338 |
| 28. The Wolverhampton and Shrewsbury District | 428 | 463 | 376 | 299 |
| Southern Totals: | 5079 | 5049 | 4894 | 3594 |
| Northern Districts: | | | | |
| 6. The Bolton and Rochdale District | 246 | 266 | 242 | 175 |
| 9. The Cumbria District | 217 | 230 | 190 | 96 |
| 11. The Chester and Stoke-on-Trent District | 423 | 355 | 406 | 268 |
| 13. The Darlington District | 358 | 385 | 342 | 177 |
| 16. The Leeds District | 385 | 364 | 357 | 191 |
| 17. The Lincoln and Grimsby District | 342 | 275 | 303 | 230 |
| 18. The Liverpool District | 340 | 337 | 340 | 492 |
| 19. The Manchester and Stockport District | 455 | 446 | 439 | 287 |
| 20. The Newcastle upon Tyne District | 537 | 484 | 504 | 388 |
| 21. The North Lancashire District | 482 | 403 | 347 | 326 |
| 22. The Nottingham and Derby District | 437 | 345 | 371 | 240 |
| 25. The Sheffield District | 406 | 434 | 446 | 258 |
| 27. The West Yorkshire District | 418 | 358 | 400 | 129 |
| 29. The York and Hull District | 448 | 461 | 396 | 241 |
| Northern Totals: | 5494 | 5143 | 5083 | 3440 |
| 10. The Channel Islands District | 62 | 56 | 48 | 50 |
| 15. The Isle of Man District | 45 | 38 | 52 | 14 |
| 30. The Cymru District | 164 | 156 | 147 | 92 |
| 31. The Scotland District | 186 | 164 | 167 | 85 |
| 32. The Shetland District | 15 | 15 | 5 | 2 |
| 33. The North Wales District | 170 | 133 | 155 | 91 |
| Totals: | 11215 | 10753 | 10551 | 7368 |

THE COMMUNITY ROLL - 1989 - 1992

Three Year
Gain/Loss

| | 1989 | 1990 | 1991 | 1992 | Three Year Gain/Loss |
|---|---------|---------|---------|---------|-------------------------|
| Southern Districts: | | | | | |
| 1. The London North-East District | 61652 | 58918 | 58843 | 56663 | -4989 |
| 2. The London North-West District | 58422 | 59319 | 58843 | 60426 | +2004 |
| 3. The London South-West District | 65426 | 65598 | 66433 | 64688 | -738 |
| 4. The London South-East District | 49238 | 49560 | 49624 | 49256 | +18 |
| 5. The Birmingham District | 56837 | 56170 | 55801 | 56753 | -84 |
| 7. The Bristol District | 51951 | 51292 | 51831 | 52139 | +188 |
| 8. The South Wales District | 29521 | 30936 | 30780 | 29498 | -23 |
| 12. The Cornwall District | 32092 | 31372 | 32487 | 33832 | +1740 |
| 14. The East Anglia District | 36971 | 37194 | 37583 | 36502 | -469 |
| 23. The Oxford and Leicester District | 50997 | 51111 | 50696 | 51489 | +492 |
| 24. The Plymouth and Exeter District | 42289 | 41251 | 39532 | 39762 | -2527 |
| 26. The Southampton District | 52291 | 53309 | 50934 | 49502 | -2789 |
| 28. The Wolverhampton and Shrewsbury District | 54285 | 53063 | 53753 | 51234 | -3051 |
| Southern Totals: | 641972 | 639093 | 637140 | 631744 | -10228 |
| Northern Districts: | | | | | |
| 6. The Bolton and Rochdale District | 28351 | 27967 | 25349 | 25305 | -3046 |
| 9. The Cumbria District | 20114 | 19126 | 19604 | 19206 | -908 |
| 11. The Chester and Stoke-on-Trent District | 52601 | 53144 | 54063 | 53099 | +498 |
| 13. The Darlington District | 44547 | 44835 | 44205 | 42893 | -1654 |
| 16. The Leeds District | 46780 | 48092 | 48182 | 47683 | +903 |
| 17. The Lincoln and Grimsby District | 31633 | 33066 | 32825 | 32217 | +584 |
| 18. The Liverpool District | 54717 | 54023 | 52741 | 53360 | -1357 |
| 19. The Manchester and Stockport District | 59277 | 58973 | 57548 | 57705 | -1572 |
| 20. The Newcastle upon Tyne District | 61464 | 59984 | 59347 | 57835 | -3629 |
| 21. The North Lancashire District | 40724 | 39931 | 38371 | 38174 | -2550 |
| 22. The Nottingham and Derby District | 50114 | 49783 | 48865 | 46945 | -3169 |
| 25. The Sheffield District | 53169 | 54746 | 50847 | 49481 | -3688 |
| 27. The West Yorkshire District | 41631 | 41045 | 41075 | 39577 | -2054 |
| 29. The York and Hull District | 49382 | 49399 | 48593 | 48136 | -1246 |
| Northern Totals: | 634504 | 634114 | 621615 | 611616 | -22888 |
| 10. The Channel Islands District | 6885 | 7072 | 7219 | 7740 | +855 |
| 15. The Isle of Man District | 4412 | 4453 | 4386 | 4231 | -181 |
| 30. The Cymru District | 7590 | 7436 | 7007 | 7353 | -237 |
| 31. The Scotland District | 15644 | 15843 | 14442 | 15226 | -418 |
| 32. The Shetland District | 1277 | 1214 | 1249 | 1255 | -22 |
| 33. The North Wales District | 9099 | 11006 | 10907 | 10344 | +1245 |
| Totals: | 1321383 | 1320231 | 1303965 | 1289509 | -31874 |

ATTENDANCE AT WORSHIP OCTOBER 1992

| | Morning | Aft'n | Evening | Principal Service | Total Attend | Total Att 1989 | Membership |
|---|---------|-------|---------|----------------------|-----------------|-------------------|------------|
| Southern Districts: | | | | | | | |
| 1. The London North-East District | 11195 | 327 | 3126 | 11470 | 14648 | 15644 | 15471 |
| 2. The London North-West District | 12139 | 409 | 3393 | 12616 | 15941 | 17556 | 16910 |
| 3. The London South-West District | 13969 | 260 | 4045 | 14291 | 18274 | 18565 | 20171 |
| 4. The London South-East District | 9941 | 228 | 2484 | 10241 | 12653 | 13546 | 14062 |
| 5. The Birmingham District | 10717 | 832 | 3833 | 11821 | 15382 | 16329 | 16807 |
| 7. The Bristol District | 11925 | 391 | 4613 | 12782 | 16929 | 17575 | 16470 |
| 8. The South Wales District | 5990 | 730 | 3350 | 7387 | 10070 | 10574 | 10551 |
| 12. The Cornwall District | 9009 | 605 | 3814 | 10093 | 13428 | 13863 | 11667 |
| 14. The East Anglia District | 9226 | 925 | 2663 | 10220 | 12814 | 13549 | 11385 |
| 23. The Oxford and Leicester District | 10447 | 804 | 3746 | 11504 | 14997 | 16335 | 15795 |
| 24. The Plymouth and Exeter District | 10885 | 978 | 4010 | 12134 | 15873 | 17524 | 15047 |
| 26. The Southampton District | 12762 | 426 | 4065 | 13354 | 17253 | 19254 | 18288 |
| 28. The Wolverhampton and Shrewsbury District | 10369 | 930 | 5830 | 12094 | 17129 | 17827 | 16795 |
| Southern Totals: | 138574 | 7845 | 48972 | 150007 | 195391 | 208341 | 199419 |
| Northern Districts: | | | | | | | |
| 6. The Bolton and Rochdale District | 5867 | 445 | 1625 | 5955 | 7937 | 8569 | 9520 |
| 9. The Cumbria District | 3675 | 957 | 1939 | 5010 | 6571 | 6623 | 6639 |
| 11. The Chester and Stoke-on-Trent District | 9341 | 1227 | 5132 | 11013 | 15700 | 16560 | 14845 |
| 13. The Darlington District | 6720 | 665 | 3367 | 8044 | 10752 | 13035 | 12656 |
| 16. The Leeds District | 8985 | 333 | 2876 | 9360 | 12194 | 13206 | 13389 |
| 17. The Lincoln and Grimsby District | 6880 | 972 | 3338 | 8443 | 11190 | 11292 | 10205 |
| 18. The Liverpool District | 10975 | 280 | 2554 | 8862 | 14466 | 12687 | 13837 |
| 19. The Manchester and Stockport District | 8860 | 480 | 3176 | 11379 | 14488 | 15634 | 16420 |
| 20. The Newcastle upon Tyne District | 8773 | 309 | 2876 | 10219 | 14732 | 15866 | 16305 |
| 21. The North Lancashire District | 9601 | 503 | 5130 | 11014 | 15234 | 13313 | 13466 |
| 22. The Nottingham and Derby District | 10013 | 1027 | 4801 | 11227 | 16647 | 16647 | 14672 |
| 25. The Sheffield District | 8572 | 613 | 3019 | 9280 | 12204 | 17053 | 14478 |
| 27. The West Yorkshire District | 9327 | 987 | 3928 | 10939 | 14242 | 13418 | 12970 |
| 29. The York and Hull District | 116221 | 9135 | 49153 | 129733 | 174509 | 16523 | 14786 |
| Northern Totals: | 1879 | 18226 | 101790 | 292052 | 385238 | 190426 | 184188 |
| 10. The Channel Islands District | 845 | 188 | 679 | 1290 | 2511 | 2695 | 2416 |
| 15. The Isle of Man District | 1349 | 741 | 821 | 2303 | 1819 | 1819 | 1731 |
| 30. The Cymru District | 3436 | 70 | 442 | 3468 | 3948 | 3645 | 4990 |
| 31. The Scotland District | 219 | 25 | 258 | 402 | 502 | 4373 | 6496 |
| 32. The Shetland District | 2699 | 222 | 833 | 2890 | 3754 | 487 | 427 |
| 33. The North Wales District | 265222 | 18226 | 101790 | 292052 | 385238 | 3534 | 4496 |
| Totals: | 265222 | 18226 | 101790 | 292052 | 385238 | 415320 | 404163 |

CHILDREN AND YOUNG PEOPLE

| | Children and Young People at Worship | | Young People | | 1992 total |
|---|--------------------------------------|-------|--------------|---------------|------------|
| | 1989 | 1992 | 1989 13 - 26 | 1992 under 13 | |
| Southern Districts: | | | | | |
| 1. The London North-East District | 3989 | 3933 | 4756 | 14065 | 17867 |
| 2. The London North-West District | 4882 | 4654 | 4665 | 13176 | 17455 |
| 3. The London South-West District | 4279 | 4154 | 4510 | 18872 | 19251 |
| 4. The London South-East District | 3327 | 3196 | 4249 | 11588 | 15293 |
| 5. The Birmingham District | 4017 | 3350 | 4281 | 16965 | 16044 |
| 6. The Bristol District | 4236 | 3926 | 3994 | 11833 | 15685 |
| 7. The South Wales District | 3301 | 2860 | 2342 | 8787 | 8357 |
| 8. The Cornwall District | 3829 | 3255 | 1583 | 5434 | 6997 |
| 12. The East Anglia District | 2975 | 2575 | 1907 | 8040 | 15453 |
| 23. The Oxford and Leicester District | 4165 | 3760 | 3649 | 11417 | 10373 |
| 24. The Plymouth and Exeter District | 3739 | 3114 | 8677 | 11417 | 10373 |
| 26. The Southampton District | 4233 | 3690 | 3406 | 13509 | 13324 |
| 28. The Wolverhampton and Shrewsbury District | 4599 | 3961 | 3549 | 10589 | 13809 |
| Northern Totals: | 51569 | 46428 | 45631 | 136533 | 177694 |
| Northern Districts: | | | | | |
| 6. The Bolton and Rochdale District | 2324 | 1955 | 2049 | 7129 | 7262 |
| 9. The Cumbria District | 1635 | 1237 | 1101 | 4622 | 3978 |
| 11. The Chester and Stoke-on-Trent District | 4093 | 3498 | 2763 | 12772 | 12412 |
| 13. The Darlington District | 3058 | 2706 | 2632 | 9661 | 11813 |
| 16. The Leeds District | 3077 | 2740 | 2903 | 12011 | 11507 |
| 17. The Lincoln and Grimsby District | 2911 | 2495 | 1886 | 8196 | 7636 |
| 18. The Liverpool District | 3584 | 3165 | 3608 | 14742 | 13192 |
| 19. The Manchester and Stockport District | 4312 | 3686 | 4170 | 16639 | 16212 |
| 20. The Newcastle upon Tyne District | 4179 | 3425 | 3081 | 15632 | 14429 |
| 21. The North Lancashire District | 2975 | 2792 | 2773 | 11944 | 9543 |
| 22. The Nottingham and Derby District | 4560 | 3901 | 3258 | 10002 | 13260 |
| 25. The Sheffield District | 4334 | 3746 | 11498 | 15094 | 14749 |
| 27. The West Yorkshire District | 3362 | 2867 | 2366 | 8937 | 11049 |
| 29. The York and Hull District | 3867 | 3126 | 3036 | 13507 | 12276 |
| Northern Totals: | 48271 | 41339 | 39222 | 166539 | 159318 |
| Totals: | 104009 | 91724 | 87620 | 268567 | 345238 |

MINISTERS AND THOSE IN PASTORAL CHARGE AND LOCAL PREACHERS

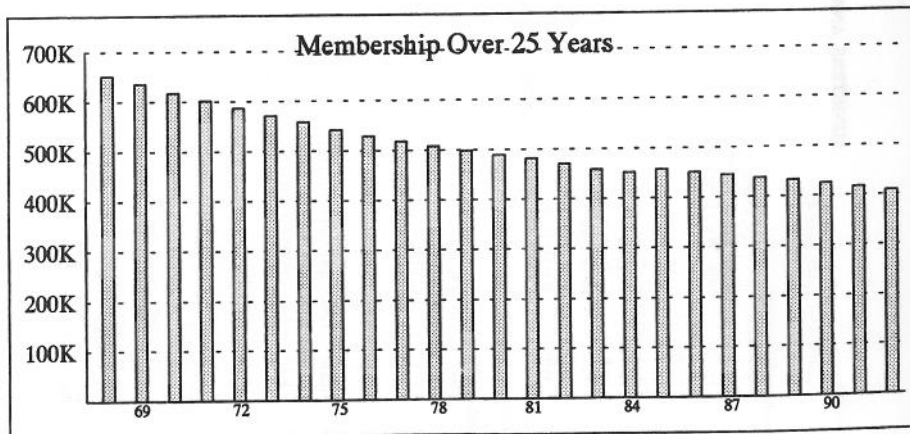
| | Ministers | Diaconate | Active Supernumeraries | Lay Wk | Reg and Reg | Oth | Members per P.chg | Cubs P.chg | Mbrs per Chch | Act LP | LP on Trial |
|---|-----------|-----------|------------------------|--------|-------------|-----|-------------------|------------|---------------|--------|-------------|
| | | | | | | | | | | | |
| Southern Districts: | | | | | | | | | | | |
| 1. The London North-East District | 85 | 1 | 3 | 1 | 3 | 1 | 166 | 2.5 | 68 | 359 | 76 |
| 2. The London North-West District | 86 | 1 | 1 | 4 | 4 | 4 | 171 | 2.5 | 70 | 427 | 77 |
| 3. The London South-West District | 98 | 1 | 1 | 9 | 7 | 3 | 170 | 1.8 | 97 | 429 | 87 |
| 4. The London South-East District | 77 | 1 | 3 | 3 | 5 | 5 | 160 | 2.3 | 71 | 317 | 46 |
| 5. The Birmingham District | 77 | 1 | 3 | 1 | 6 | 8 | 193 | 2.6 | 74 | 422 | 52 |
| 6. The Bristol District | 71 | 1 | 4 | 3 | 8 | 3 | 183 | 3.3 | 55 | 471 | 71 |
| 7. The South Wales District | 47 | 1 | 1 | 1 | 7 | 1 | 192 | 3.7 | 52 | 247 | 49 |
| 12. The Cornwall District | 54 | 2 | 3 | 1 | 1 | 1 | 198 | 5.8 | 34 | 445 | 70 |
| 14. The East Anglia District | 59 | 1 | 8 | 4 | 4 | 2 | 144 | 4.2 | 35 | 420 | 70 |
| 23. The Oxford and Leicester District | 70 | 1 | 2 | 5 | 9 | 1 | 182 | 3.3 | 55 | 449 | 75 |
| 24. The Plymouth and Exeter District | 64 | 1 | 1 | 1 | 4 | 1 | 198 | 4.3 | 46 | 476 | 61 |
| 26. The Southampton District | 76 | 1 | 6 | 5 | 10 | 3 | 173 | 2.7 | 64 | 473 | 72 |
| 28. The Wolverhampton and Shrewsbury District | 71 | 1 | 1 | 4 | 6 | 1 | 215 | 3.7 | 58 | 425 | 71 |
| Southern Totals: | 935 | 8 | 34 | 47 | 74 | 18 | 179 | 3.1 | 58 | 5360 | 877 |
| Northern Districts: | | | | | | | | | | | |
| 6. The Bolton and Rochdale District | 42 | 1 | 1 | 2 | 1 | 1 | 216 | 2.6 | 82 | 172 | 39 |
| 9. The Cumbria District | 31 | 1 | 3 | 3 | 2 | 2 | 212 | 4.9 | 39 | 258 | 21 |
| 11. The Chester and Stoke-on-Trent District | 60 | 1 | 1 | 1 | 1 | 1 | 201 | 3.9 | 56 | 390 | 65 |
| 13. The Darlington District | 59 | 1 | 1 | 2 | 1 | 1 | 203 | 2.7 | 52 | 308 | 62 |
| 16. The Leeds District | 61 | 1 | 1 | 1 | 1 | 1 | 179 | 5.1 | 75 | 291 | 53 |
| 17. The Lincoln and Grimsby District | 54 | 1 | 1 | 3 | 2 | 1 | 198 | 2.1 | 35 | 343 | 62 |
| 18. The Liverpool District | 61 | 2 | 2 | 1 | 1 | 1 | 211 | 2.5 | 95 | 248 | 42 |
| 19. The Manchester and Stockport District | 74 | 1 | 1 | 1 | 5 | 2 | 199 | 2.7 | 72 | 401 | 55 |
| 20. The Newcastle upon Tyne District | 74 | 1 | 1 | 1 | 1 | 1 | 224 | 2.5 | 91 | 300 | 39 |
| 21. The North Lancashire District | 58 | 1 | 2 | 2 | 1 | 2 | 181 | 3.8 | 48 | 475 | 75 |
| 22. The Nottingham and Derby District | 74 | 1 | 2 | 4 | 7 | 1 | 183 | 3.7 | 49 | 421 | 84 |
| 25. The Sheffield District | 65 | 1 | 1 | 1 | 6 | 2 | 194 | 2.9 | 66 | 362 | 52 |
| 27. The West Yorkshire District | 60 | 3 | 3 | 3 | 2 | 1 | 195 | 4.2 | 47 | 404 | 76 |
| 29. The York and Hull District | 65 | 9 | 16 | 24 | 30 | 11 | 198 | 3.3 | 59 | 4729 | 784 |
| Northern Totals: | 838 | 17 | 59 | 76 | 108 | 29 | 189 | 3.2 | 58 | 10414 | 1722 |
| 10. The Channel Islands District | 12 | | | 1 | | | 186 | 2.6 | 71 | 41 | 3 |
| 15. The Isle of Man District | 8 | | | 2 | 3 | | 216 | 4.9 | 44 | 37 | 6 |
| 30. The Cymru District | 12 | | 7 | 2 | | | 208 | 6.9 | 30 | 49 | 4 |
| 31. The Scotland District | 28 | 1 | 1 | 2 | | | 224 | 1.9 | 120 | 94 | 24 |
| 32. The Shetland District | 3 | | | 2 | | | 85 | 4.4 | 19 | 10 | 1 |
| 33. The North Wales District | 17 | 1 | 1 | 2 | 1 | | 237 | 3.7 | 63 | 94 | 23 |
| Totals: | 1853 | 17 | 59 | 76 | 108 | 29 | 189 | 3.2 | 58 | 10414 | 1722 |

The total of those in Pastoral charge has been used to calculate the two relevant columns above. As well as Ministers and Priests, Diaconate, Active Supernumeraries, Lay Workers, Recognised and Regarded Ministers and Others (Authorised Ministers, Ministers without appointment and those from Overseas) are reported as taking Pastoral Charge.

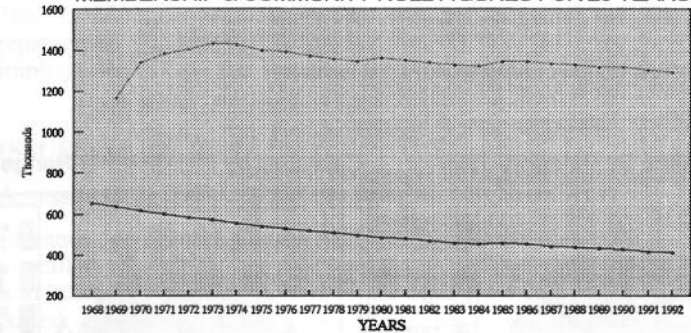
A. Comments on the Triennial Returns:

1. When looking at the returns the temptation is to find what positive things can be said, but it is necessary to address the serious situation which faces the Church. Over the three years there has been a 1.7% decrease in the Community Roll, a 5.4% decrease in Membership and a 7.3% decrease in Attendance.
2. Compared to 1991 the number of new members rose from 1.76% to 1.83% over the Connexion as a whole, though this lags considerably behind Deaths which were at 2.54% in 1992.
3. The decline in the numbers attending Sunday School/Junior Church by 4% from 1991 to 1992 is of concern, though the number of Young People the Church has links with does appear to be more stable.
4. Pastorally it is encouraging to see that the negative balance in transfers to other Circuits has declined from 829 in 1986 to 400 in 1992 indicating that greater care is being taken in transferring members when they move to other areas.
5. Areas of True Growth need to be looked at as they give important pointers for the Church as a whole.
 - (i) 94 (13.6%) Circuits recorded true growth in 1992 of which 31 also recorded true growth in 1991 and 11 recorded true growth in all three years of the Triennial Returns.
 - (ii) 29.5% of our churches recorded an increase in membership for 1992. However, the 70.5% of churches not making any new members when shown as a pie chart shows frightening similarities to a well known 'muncher' familiar to computer game addicts! (See charts below)

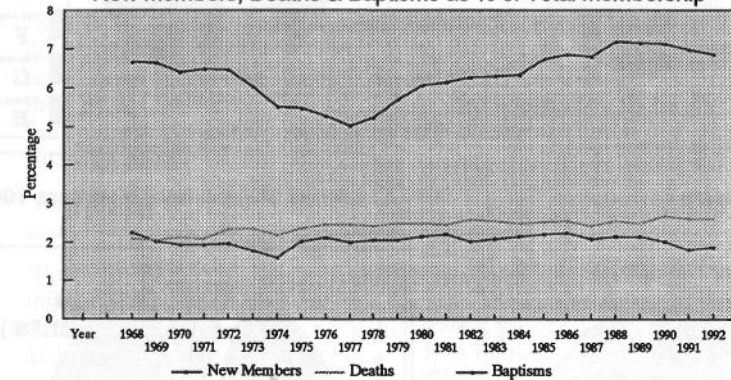
B. Pictorial Representation



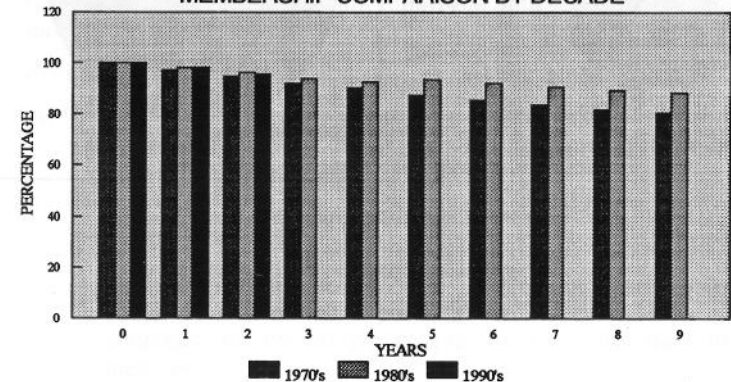
MEMBERSHIP & COMMUNITY ROLL FIGURES FOR 25 YEARS



New Members, Deaths & Baptisms as % of Total Membership



MEMBERSHIP COMPARISON BY DECADE



MOOD

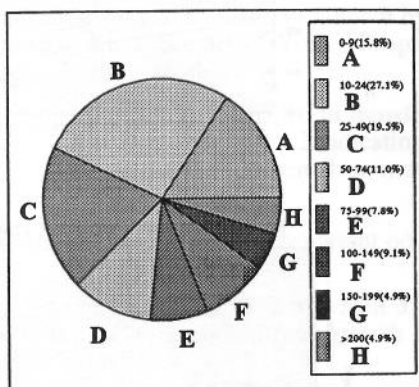
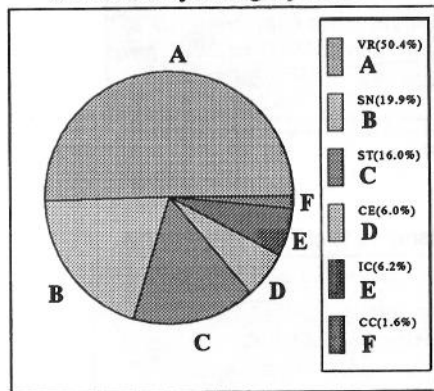
*** RESOLUTIONS

A6 The Conference receives the Triennial Statistics

A7 The Conference welcomes the bringing together of the Divisional representatives and the Administrative Officer to consider the mission implications of both the Triennial Returns and the Property Survey.

Churches By Category 1992

Churches by Membership Range 1992



Churches by Attendance Range 1992

Churches Making New Members 1992

